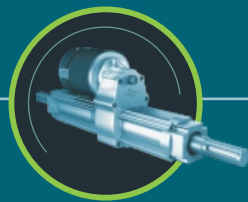
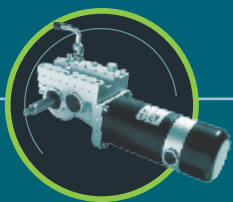
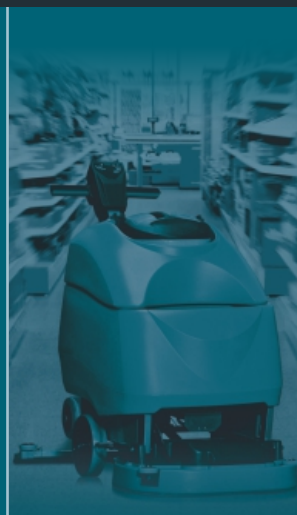


WORLD OF D. C. MOTORS





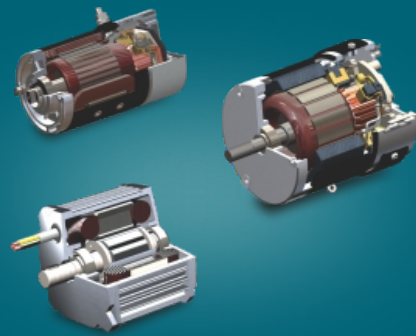
Rotomag and its group companies, comprising of 4 brands have been manufacturing high performance D.C. and A.C. motors as well as gearboxes and electric drive systems for over 20 years.

We have built our design and manufacturing expertise by working closely with demanding global customers and through the knowledge transfer from our European joint venture partners. Our processes and quality are continuously upgraded along with the expansion of our manufacturing infrastructure.

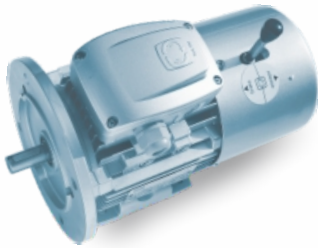
In addition to our range of over 500 types of permanent magnet DC and wound field DC motors, we offer geared motors, transaxles, wheel drives for a wide range of industries and applications.

CORE TECHNOLOGIES

Rotomag has expertise, jointly with our group companies, in diverse motor technologies. We can custom design permanent magnet DC motors, series and shunt wound DC motors, brushless DC motors and controllers for such motors. These motors in tandem with worm, helical and planetary gear heads enable us to offer a wide variety of electric drive systems.



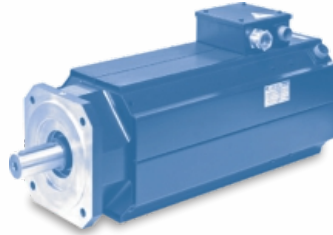
rotomotive
Looks good. performs better.



Rotomotive Powerdrives India Ltd, joint venture with Motive Srl, Italy manufactures AC motors, special purpose motors, helical, worm and bevel-helical gearboxes.

www.rotomotive.com

magtor
servomotion



Magtor Servomotion Pvt. Ltd, joint venture with Magnetic Srl, Italy manufactures AC servo motors, vectorial motors, servo drives, BLDC motors.

www.magtor.com

ROTOMAG
Water from the Sun



Rotosol, a solar pump division of Rotomag manufactures ultra efficient surface and submersible solar pumps based on BLDC and PMDC technology.

www.rotosol.solar

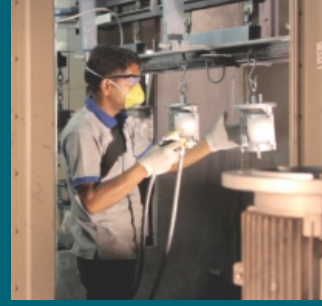
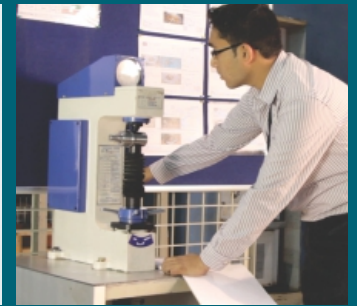




BENCHMARKED PROCESSES

Our three plants, having a floor area of over 20,000 sq meters, have state-of-the-art processes and manufacturing facilities. Lean manufacturing with assurance of ISO 9001 certified quality systems ensures consistent quality, production flexibility and control of process variability. All key processes are validated using FMEA and process capability studies.

Processes like controlled magnetizing, trickle impregnation, Resiglas banding, laser mica undercutting, dual flyer winding, dynamic balancing enable us to build product reliability through our manufacturing processes.



20K
sq m
Area

140
Employees

24
Engineers

35%
CAGR in
sales

500+
Unique
products

50+
New products
every year

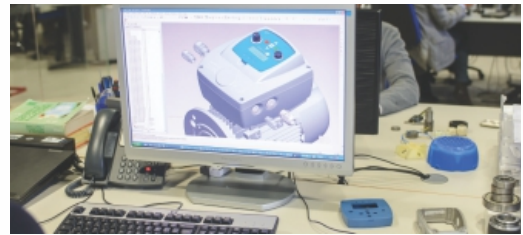
30+
Countries
export

CE, ROHS
compliant

ROTOMAG ADVANTAGES

Product Development Skills

Our core strength lies in application engineering and translating the application data into PMDC motors, series, separately excited and geared motors.



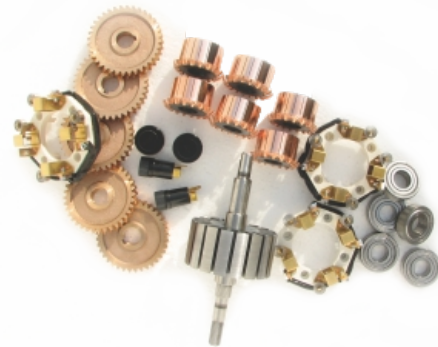
Multiple technologies & Applications

Our exposure to various technologies, including those of our group companies covering a wide spectrum of applications enable us to design and build customised solutions very quickly and meet the performance and quality expectations of our discerning customers.



World class supply chain

Our suppliers are some of the best in India and in the world. Long term agreements with our dedicated suppliers enables us to meet the cost and quality goals of our customers.



International Exposure

We export to over 30 countries and have an experience of working with customers who are leaders in their business. Prompt communications, visual reports, close interface between our development engineers and those of our customers make it easy for our customers to do business with us.

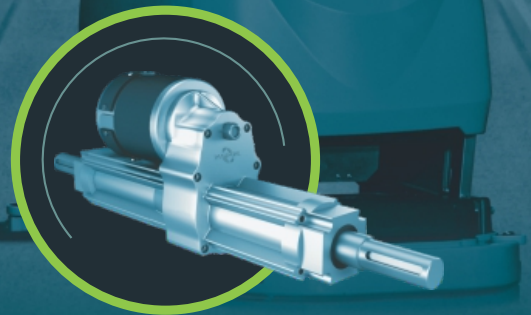
Quality systems and IT enabled manufacturing

We are an ISO 9001 company and extensively use IT tools like bar coding, laser marking, ERP, CRM and Sharepoint services to ensure that our operations are consistent and efficient.



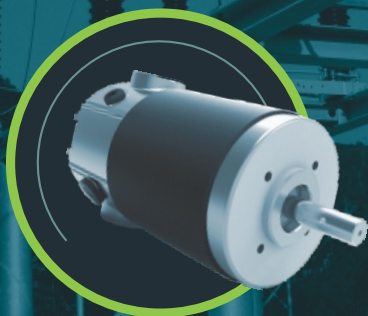
Our wide range of permanent magnet DC motors, would field DC motors, brushless DC motors and electronic controllers have been designed to operate most efficiently and reliably for variety of applications. We continuously improve our products through sustained endurance and type testing, often jointly with our customers.

MOTORS FOR FLOOR CARE



Page 8-9

SWITCHGEAR / DISCONNECTOR MOTORS



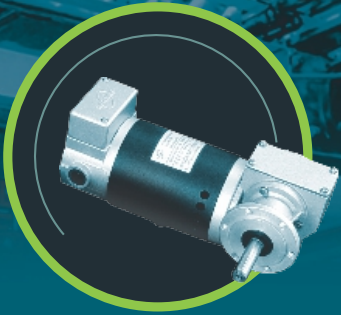
Page 12

HOIST AND WINCH MOTORS



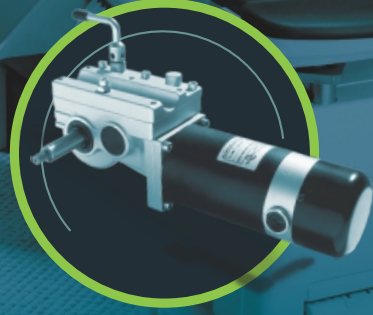
Page 13

**INDUSTRIAL DC
AND AUTOMATION
MOTORS**



Page 10

**STAIRLIFT
AND MOBILITY
MOTORS**



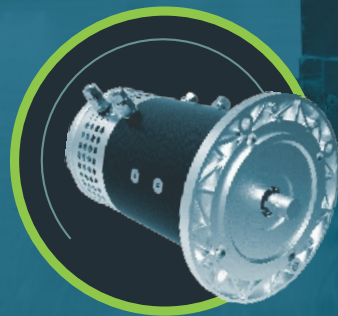
Page 11

**MOTORS FOR
HYDRAULIC
POWER PACKS**



Page 14

**MOTORS FOR
MATERIAL
HANDLING**



Page 15

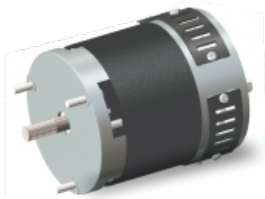
MOTORS FOR FLOOR CARE

Rotomag offers a range of brush motors, drive motors and transaxles for floor care equipment. These motors have several unique features that result in compact, efficient solutions and are available with worm and helical gear heads as well as ungeared versions. The transaxles have oversized bearings and precisely ground helical gears and lapped bevel gears.

ADVANTAGES

- R**ibbed aluminium housings for improved reliability
- A**nti-corrosion powder coated body
- H**elical gears ground to Din class 7
- P**ermanently lubricated bearings
- L**ow noise
- E**asy replacement, long life brushes

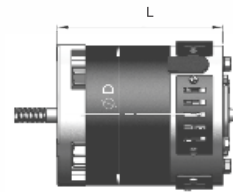
BRUSH MOTORS-UNGEARED



AB/HK SERIES

Available in TENV-TEFC-SPDP
 Protections Option: IP-20, IP-44, IP-54

**Diameter & length mentioned suitable for 1500RPM
 Speed range: 1000 RPM to 3500 RPM*



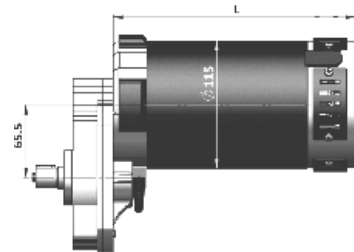
Power(KW)	Voltage	D	*L
0.08	12V-24V- 36V-48V	89	143
0.12		89	161
0.18		114	200
0.37		114	220
0.56		114	260
0.75		114	300

BRUSH MOTORS-GEARED



RM SERIES

Ratio: 1:10
 Available in TENV-TEFC-SPDP
 Protections Option: IP-20, IP-44
** Length mentioned is suitable for 150RPM
 Speed range: 100 RPM to 300 RPM*

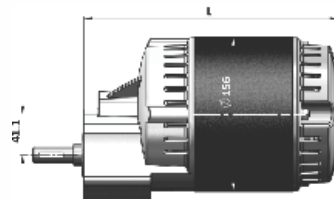


Power(KW)	Voltage	*L
0.18	12V-24V-36V- 48V	205
0.37		225
0.56		245
0.75		265



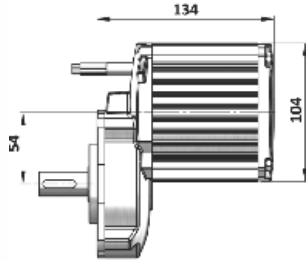
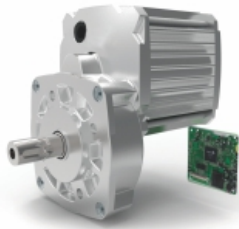
TNT SERIES

Ratio: 1:5.2
 Type-SPDP
 Protection: IP-20
**Length mentioned is suitable for 200RPM
 Speed range :200 RPM to 600 RPM*



Power(KW)	Voltage	*L
0.56	24V-36V-48V	256
0.75		256
1.1		278

BRUSHLESS D C MOTORS

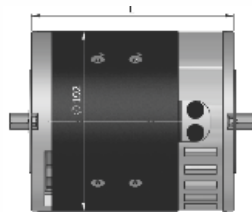


BD SERIES

Speed :180 RPM

Power (KW)	Voltage	D	Speed (RPM)
0.53	24V	104	180

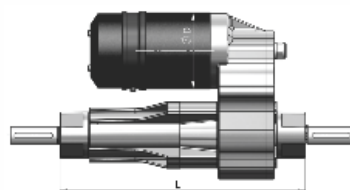
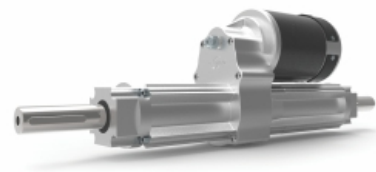
DRIVE AND TRANSAXEL MOTORS



HWA SERIES

Available in TENV-TEFC-SPDP
 Protections Option: IP-20, IP-44, IP-54
**Shown length consider for 1800 RPM*
 Speed range: 1000 RPM to 3500 RPM
 Shunt wound motor

Power (KW)	Voltage	L
0.75	36V-48V	216
1.5		323
2.2		430




JTA SERIES

Ratio: 1:18.85
 Available in TENV-SPDP
 Protections Option: IP-20, IP-44, IP-54
 Speed range: 65 RPM to 160 RPM


Power (KW)	Voltage	L
0.1 to 0.45	12V-24V-36V	185 to 395

OPTIONS


Brake




Ferrite Core



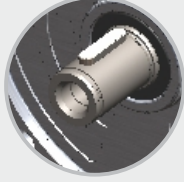
Special Connectors



Terminal Bolt



Special Shaft



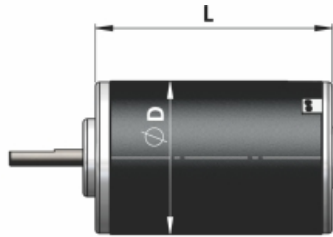
More Customisation options on request

INDUSTRIAL DC AND AUTOMATION MOTORS

Rotomag's Permanent Magnet D.C. Motors for use in automation are specially designed for continuous operation and frequent start-stops and reversals. TEFC/TENV construction with IP-44/ IP-55 protection make them suitable for use in ambients till 45°C.

ADVANTAGES

- Use of high coercivity PATENTED magnets prevents demagnetization even in conditions which involve frequent start-stops
- Externally replaceable brushes
- Window for cleaning of commutator
- Prevision balancing for low noise and vibration
- Higher quality SKF ball bearings

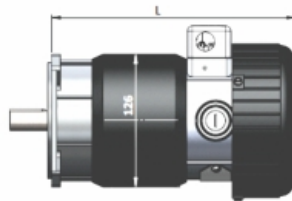
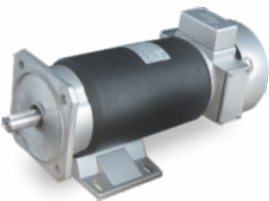


R-CT SERIES

Available in TENV-TEFC-SPDP
 Protections Option: IP-20, IP-44
 S1, S2, S3 Duty cycle

*Length mentioned suitable for 1500RPM
 Speed range: 1000 RPM to 3500 RPM

Power (KW)	Voltage	D	*L
0.15	12V-24V	63	88
0.30		63	122
0.50		63	152
0.40		75	121
0.60		75	151

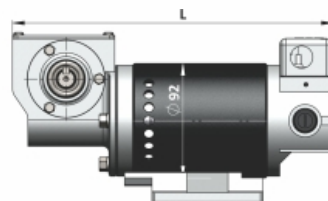
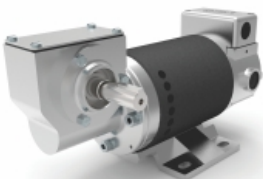


M SERIES

Available in TENV-TEFC-SPDP
 Protections Option: IP-20, IP-44
 S1, S2, S3 Duty cycle IEC
 Frame Mounting

*Length mentioned suitable for 1500RPM
 S1-TEFC motor Speed range:
 1000 RPM to 3500 RPM

Power (KW)	Voltage	*L
0.18	12V-24V-36V-	245
0.37	48V-90V-110V-	265
0.75	180V-220V	345



S1NR-S2NR

Ratio: 16, 32, 55
 Available in TENV-SPDP
 Protections Option: IP-20, IP-44
 S1, S2, S3 Duty cycle
 Speed range: 60 RPM to 220 RPM

Power (KW)	Voltage	*L
0.075	12V-36V-	225
0.18	48V-90V-110V- 180V-220V	257

OPTIONS

Planetary Gearbox



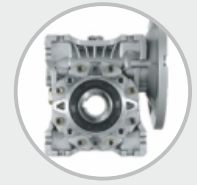
Inline Helical Gearbox



Worm Gearbox



Worm-box type



Brake



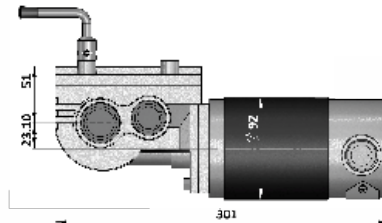
More Customisation options on request

STAIRLIFT AND MOBILITY MOTORS

Motors for marine winches and hoists are made for S2 intermittent duty and special features to withstand very high starting current. Bodies are powder coated to withstand the corrosive effects of the humid marine environment.

ADVANTAGES

- Rugged brush holders
- High conductivity brushes
- Very high starting current
- Brazed winding joints
- Powder coated externally



WH SERIES

Ratio: 32
 Protections Option: IP-44, IP20

Power (KW)	Voltage	Speed (RPM)
0.28	24V	25

OPTIONS

Planetary Gearbox



Inline Helical Gearbox



Worm Gearbox



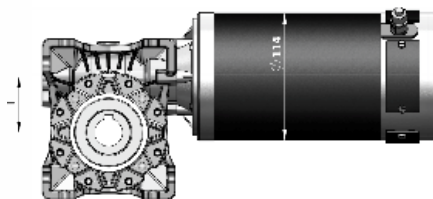
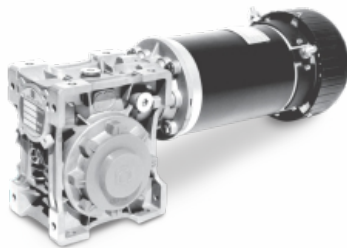
Thermal switch Protection



Special Shaft



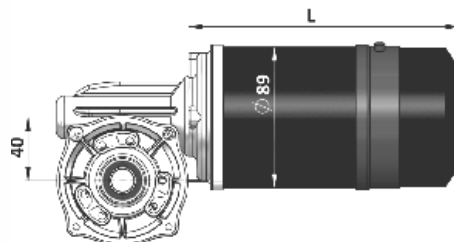
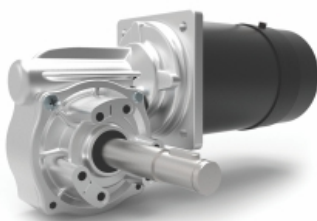
More Customisation options on request



HK SERIES

Ratio: 7.5, 10, 15, 20, 25, 30, 40, 50, 60, 80, 100
 Protection: IP-44, IP-20

Power(KW)	Voltage	D	I	Speed(RPM)
0.18 to 0.75	12V-24V 36V-48V	114	40, 50, 63, 75	10 to 400



RMP SERIES

Ratio: 18
 Protections Option: IP-44, IP-20

Power (KW)	Voltage	*L
0.15	24V-36V-48V	154
0.26		172

SWITCHGEAR/ DISCONNECTOR MOTORS

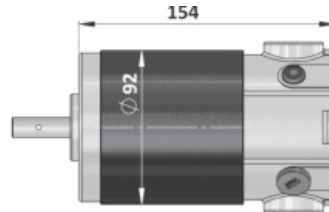
These customized motors are specially built with very compact dimensions for intermittent operation. Very high starting torque and very good regulation make these motors superior to universal motors.

ADVANTAGES

- V**ery high starting torque
- O**peration till 60% voltage
- H**igh regulation
- B**rushes last lifetime



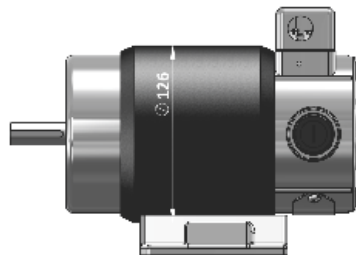
AB SERIES



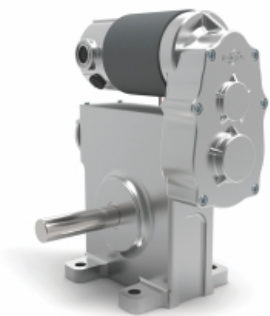
Power (KW)	Voltage	Speed (RPM)
Up to 0.75	90V- 110V- 220V	Up to 4000



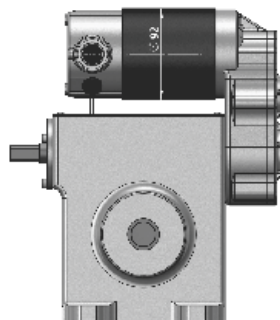
M SERIES



Power (KW)	Voltage	Speed (RPM)
Upto 1	90V-110V-220V	Up to 4500



SS SERIES



Power (KW)	Voltage	Speed (RPM)
0.18 & 0.37	90V-110V- 220V	2.6

OPTIONS

Rectifier



Special connectors



Worm Gearbox



Inline Helical Gearbox



Planetary Gearbox



Special Shaft



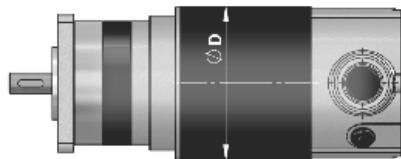
More Customisation options on request

HOIST AND WINCH MOTORS

Motors for marine winches and hoists are made for S2 intermittent duty and special features to withstand very high starting current. Bodies are powder coated to withstand the corrosive effects of the humid marine environment.

- ### ADVANTAGES
- Rugged brush holders
 - High conductivity brushes
 - Very high starting current
 - Brazed winding joints
 - Powder coated externally

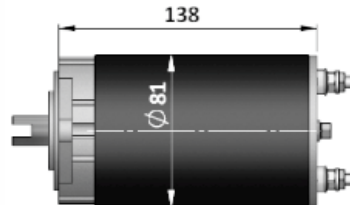
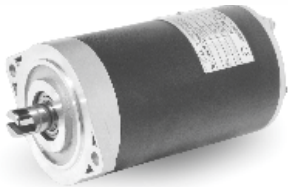
PLANETARY GEARED MOTOR



AB/HK SERIES

Ratio: 3, 4, 9, 16, 27, 64
Foot, Face, Flange Options
Available in TENV-TEFC-SPDP

Power (KW)	Voltage	D	Speed (RPM)
0.08 to 0.18	12V-24V-	89	20 to 200
0.15 to 0.75	36V-48V	114	



G SERIES

PM Motor Protection: IP-44
S2-S3 Duty cycle

Power (KW)	Voltage	Speed (RPM)
0.15 to 0.8	12V-24V	1500 to 4500



HP-BT SERIES

Series /Compound wound Motor
Protection: IP-44, IP-20
S2-S3 Duty cycle

Power (KW)	Voltage	D	Speed (RPM)
0.08 to 2.2	12V-24V	114	1500 to 4500
1 to 3		125	

OPTIONS

Brake



Inline Helical Gearbox



Worm Gearbox



Blackodized Components



Canopy



Special Mounting



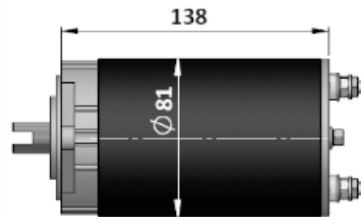
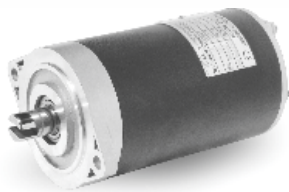
More Customisation options on request

MOTORS FOR HYDRAULIC POWER PACKS

These motors are available in Series and Compound version and have superior build quality. Option of different shaft and without drive end shield is available. Use of rugged brush holders results in cooler operation of the motors.

ADVANTAGES

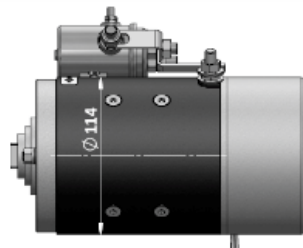
- High starting torque
- Silent and smooth operation
- Longer brush life
- Powder coated shells-resistant to corrosion



G SERIES

PM Motor
Protection: IP-44
S2-S3 Duty cycle

Power (KW)	Voltage	Speed (RPM)
0.15 to 0.8	12V-24V	1500 to 4500



HP SERIES

Type: Compound, Series, Shunt
Protection: IP-44, IP20
S2-S3 Duty Cycle

Power (KW)	Voltage	Speed (RPM)
0.6 to 2.2	12V-24V	1500 to 4500



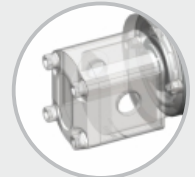
BT SERIES

Type: Compound, Series, Shunt
Protection: IP-44, IP20
S2-S3 Duty Cycle

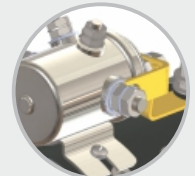
Power (KW)	Voltage	Speed (RPM)
1.5 to 4	12V-24V	1500 to 4500

OPTIONS

Pump Mountings



Starting Switch



Brake



Thermal Switch Protection



Special Shaft



Special Mountings



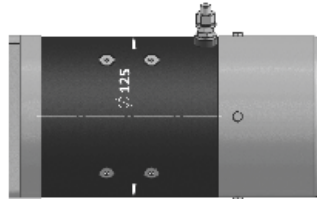
More Customisation options on request

MOTORS FOR MATERIAL HANDLING

Traction motors are designed for continuous operation and also momentary over-loads and have high starting torque. Oversized brushes result in high brush life and the brushes are easy to replace. Terminals are of extruded brass or copper.

ADVANTAGES

- Smooth and silent operation
- Long life brushes
- Easy brush replacement
- SKF ball bearings



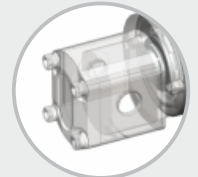
BT SERIES

Type: Compound, Series, Shunt
Protection: IP-44, IP20
S2-S3 Duty Cycle

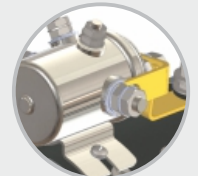
Power (KW)	Voltage	Speed (RPM)
1.5 to 4	12V-24V	1500 to 4500

OPTIONS

Pump Mountings



Starting Switch



Brake



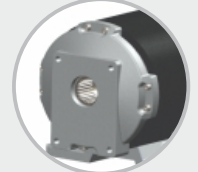
Thermal Switch Protection



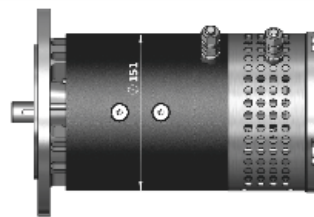
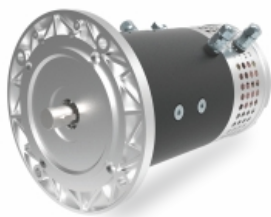
Special Shaft



Special Mountings



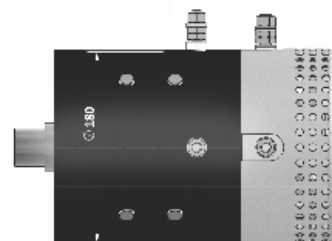
More Customisation options on request



FT SERIES

Type: Compound, Series, Shunt
Protection: IP-44, IP20
S2-S3 Duty Cycle

Power (KW)	Voltage	Speed (RPM)
1.5 to 4.5	12V-24V-36V-48V	1500 to 4500



HW SERIES

Type: Compound, Series, Shunt
Protection: IP-44, IP20
S2-S3 Duty Cycle

Power (KW)	Voltage	Speed (RPM)	D
1.5 to 8	12V-24V-36V-48V	1500 to 4500	180
3 to 13			192



ROTMAG MOTORS & CONTROLS PVT LTD
2102/03 & 04, GIDC, Vitthal Udhyognagar,
Near Anand - 388121, Gujarat, India

Phone : +91 92746 84894 / +91 93771 73406
Email : sales@rotomag.com
Web : www.rotomag.com